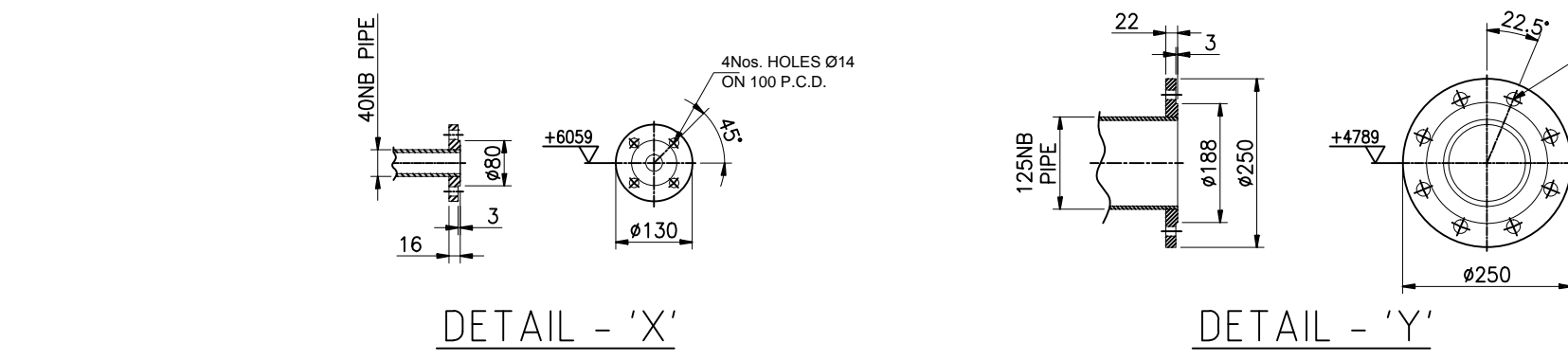
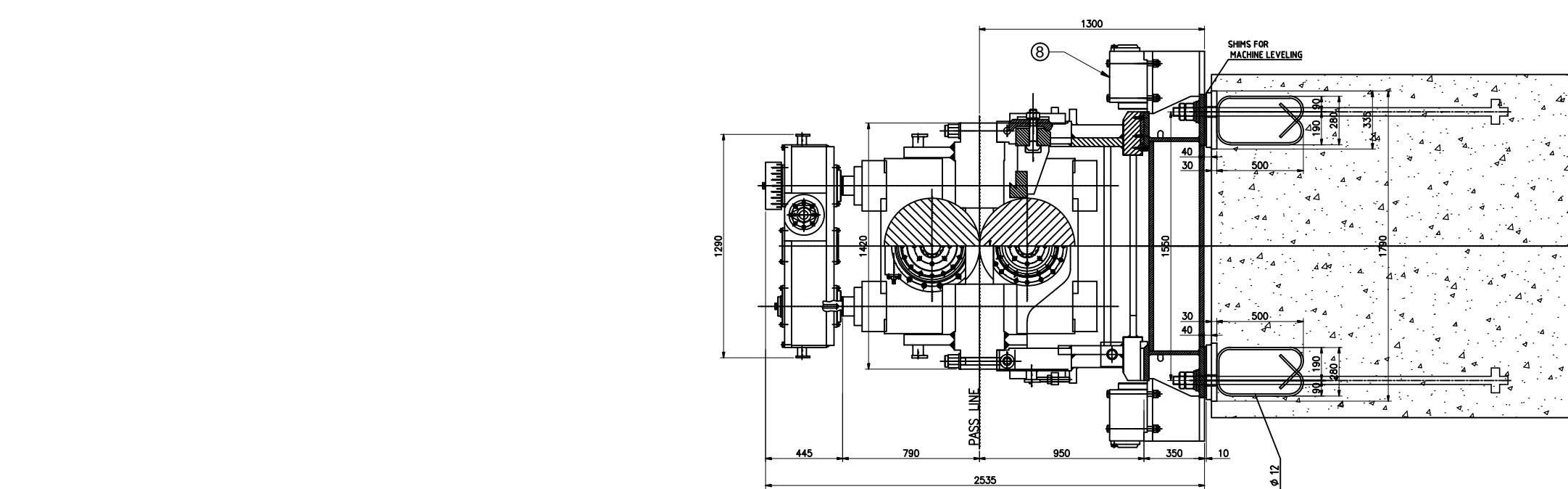
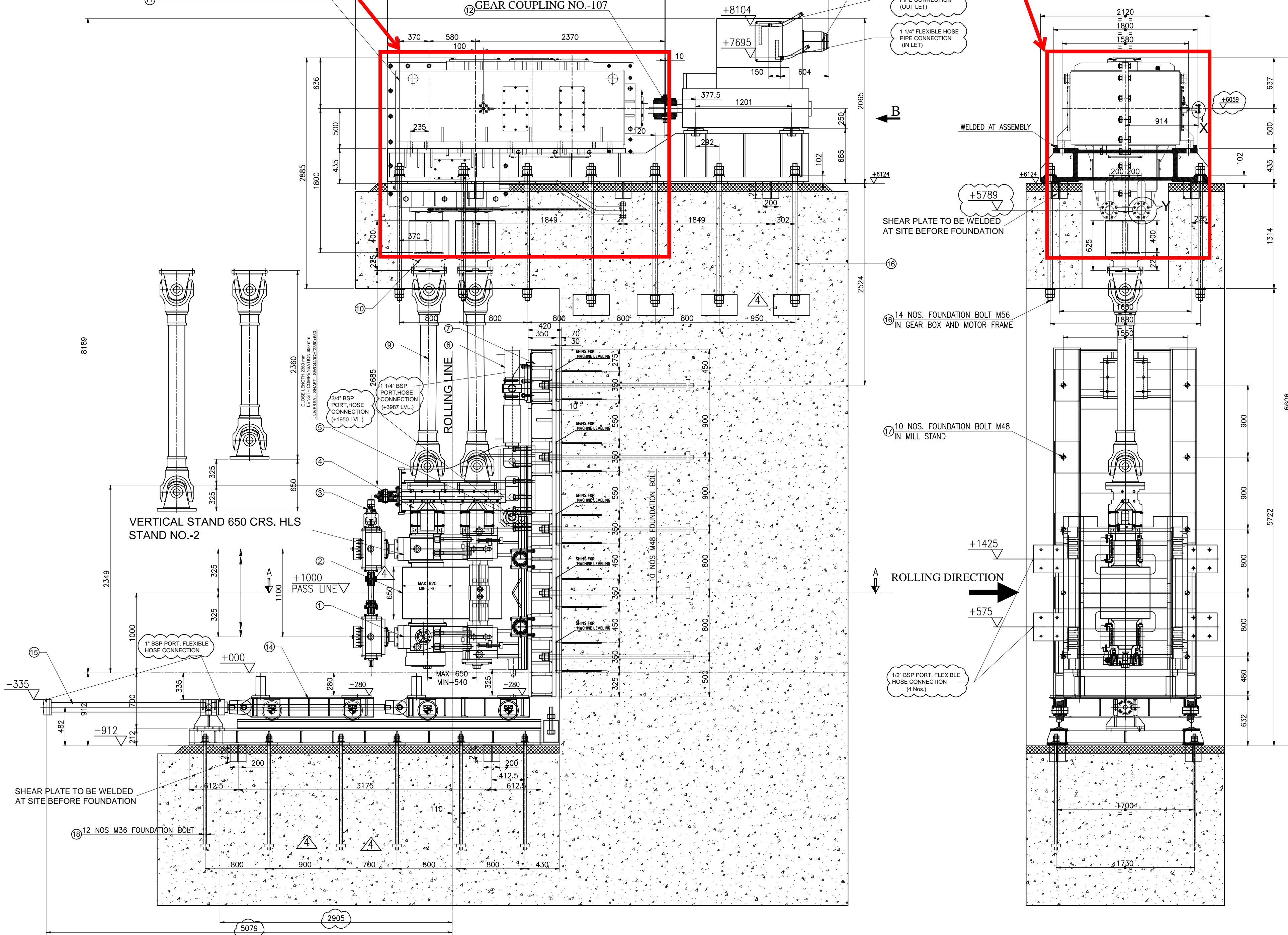


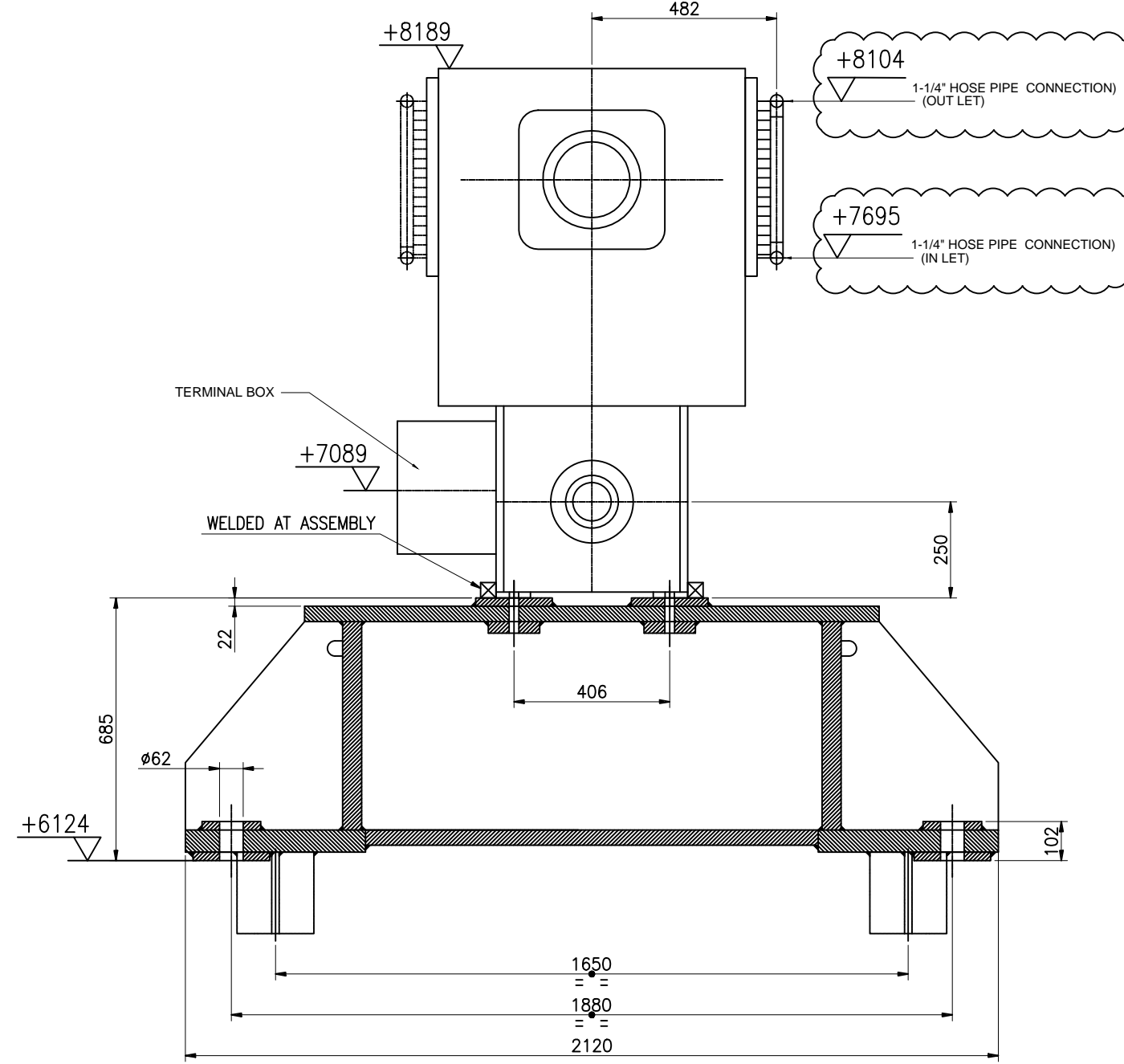
SRR-1408-310

NOMINAL RATIO - 67.9/1  
ACTUAL RATIO - 67.42/1  
STAND NO. - 2V  
PINION CENTER - 580 mm  
TYPE OF LUBRICATION - FORCED (75 LPM)

MOTOR KW - 400  
RPM - 1500/3000  
FRAME SIZE - DMI 250 Y (LDB)  
STAND NO. - 2V  
(WATER COOLED)



REV.	REVIZYON / REVISION	TARİH/DATE	İSİM/NAME	İMZA/SIGN.	ONAY/CHECKED
1	GROUTING PLATE AND SHEAR PLATE ADD IN BASE FRAME	25-09-14	SUNIL		
2	GEAR BOX & MOTOR MOUNTING CHANGE	10-10-14	SUNIL		
3	GEAR BOX CHANGE AND FOUNDATION BOLT QTY REDUCE	02-12-14	SUNIL		
4	FOUNDATION HOLE CENTRE DISTANCE CHANGED.	09-12-14	SUNIL		
5	SHIMS FOR MACHINE LEVELING ADD IN DRAWING	14-01-15	SUNIL		
6	PART NO. CALL OUT & LISTED AND PORT SIZE MARKED AS PER CUSTOMER COMMENTS	03-07-15	SUNIL		
7	PART NO. CALL OUT & LISTED AND PORT SIZE MARKED AS PER CUSTOMER COMMENTS	28-11-15	SUNIL		



18	FOUNDATION BOLT M36 FOR SLIDING CAR	12	---
17	FOUNDATION BOLT M48 FOR MILL STAND	10	---
16	FOUNDATION BOLT M56 FOR GEAR BOX AND MOTOR FRAME	14	---
15	HYD. CYLINDER FOR SLIDING CAR ASSEMBLY 125x70x2000 mm (BORE x ROD x STROKE)	01	---
14	SLIDING CAR ASSEMBLY	01	---
13	ELECTRIC MOTOR 400 Kw	01	---
12	GEAR COUPLING NO.-107	01	---
11	GEAR BOX RATIO 67.42/1	01	---
10	COUPLING FOR PINION SIDE Ø500x625 mm	02	---
9	UNIVERSAL SHAFT - SWC440CH*2360+650	02	---
8	HYD. CYLINDER FOR STAND CLAMPING 165x100x39 mm (BORE x ROD x STROKE)	04	---
7	FABRICATED BASE FRAME FOR MILL STAND	01	---
6	HYD. CYLINDER FOR STAND SHIFTING 200x140x800 mm (BORE x ROD x STROKE)	01	---
5	HYD. CYLINDER FOR STAND LOCKING 80x56x150 mm (BORE x ROD x STROKE)	01	---
4	CROSS COUPLING HEAD ROLL SIDE	02	---
3	HYDRAULIC MOTOR MODEL -GM2 630	01	---
2	ROLL	02	---
1	HOUSING LESS MILL STAND 650 mm	01	---
S.NO.	DESCRIPTION	QTY	REMARKS

PREET

PREET  
Machines Limited  
UNIT OF PREET GROUP

TITLE  
GENERAL ARRANGEMENT  
VERTICAL 650 mm STAND - 2V  
CLIENT PROJECT-170  
SHEET-2

SCALE-1:1  
DESIGN  
DRAWN S.K.UPADHYAY  
CHECK  
APPRD. S.K.SHARMA  
DATE  
09-09-2014  
09-09-2014  
DRW.NO. SRR-1408-310  
R-7